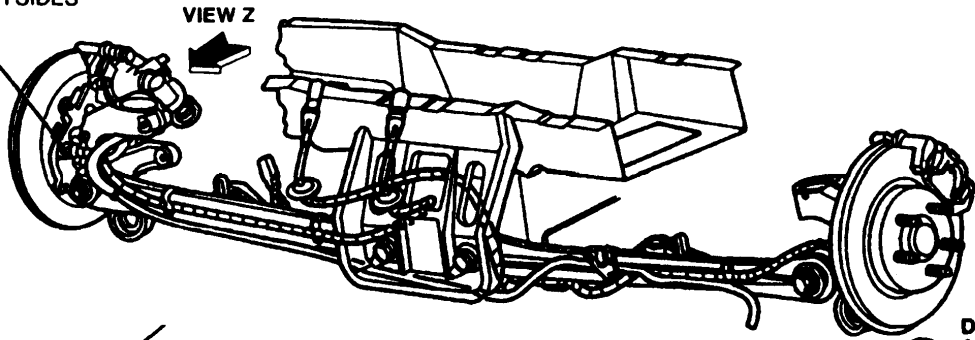
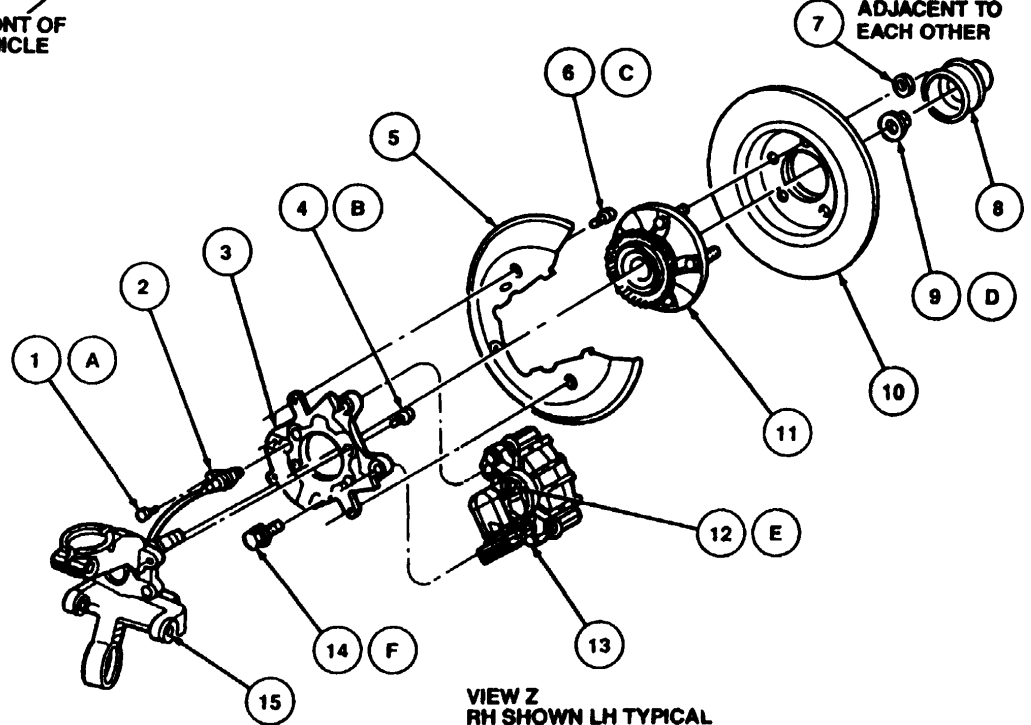


ROUTE ANTI-LOCK WIRE
UNDER PARKING BRAKE
CABLE-BOTH SIDES



FRONT OF
VEHICLE

DO NOT INSTALL
ADJACENT TO
EACH OTHER



Item	Part Number	Description
1	N805151-S100	Bolt
2	2C216 (LH) 2C190 (RH)	Rear Brake Anti-Lock Sensor
3	2C101 (LH) 2C100 (RH)	Rear Disc Brake Adapter
4	N805086-S100	Bolt (4 Req'd)
5	2C028	Rear Wheel Disc Brake Shield
6	N802726-S2	Screw (3 Req'd)
7	4B477	Retainer Nut (2 Req'd)
8	1N135	Front Hub Cap Grease Seal
9	4B477	Rear Axle Wheel Hub Retainer
10	2C026	Rear Disc Brake Rotor

Item	Part Number	Description
11	1104	Wheel Hub
12	2208	Wheel Cylinder Bleeder Screw
13	2552 2553	Rear Disc Brake Caliper
14	N807146-S181	Bolt (2 Req'd)
15	4A013	Rear Wheel Spindle
A	—	Tighten to 4.5-6.8 N·m (40-60 Lb-in)
B	—	Tighten to 59-81 N·m (44-60 Lb-Ft)
C	—	Tighten to 8-12 N·m (6-9 Lb-Ft)
D	—	Tighten to 255-345 N·m (188-254 Lb-Ft)
E	—	Tighten to 8-13 N·m (7-11.5 Lb-in)
F	—	Tighten to 87-119 N·m (64-88 Lb-Ft)