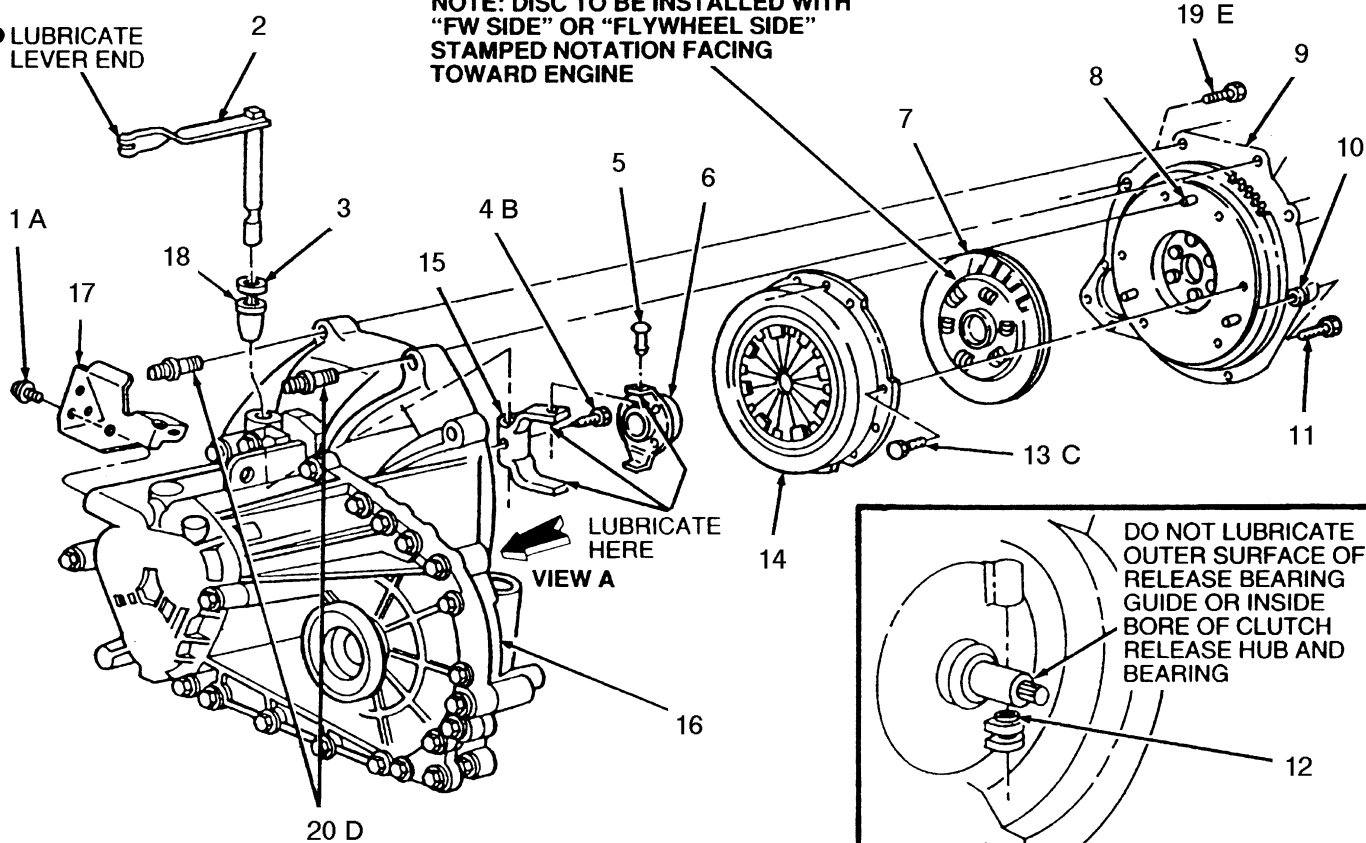


● LUBRICATE LEVER END

NOTE: DISC TO BE INSTALLED WITH "FW SIDE" OR "FLYWHEEL SIDE" STAMPED NOTATION FACING TOWARD ENGINE



● USE PREMIUM LONG-LIFE GREASE XG-1-C OR XG-1-K (ESA-M1C75-B)

- |  |                                       |
|--|---------------------------------------|
| 1. Bolt (2 req'd)                                    | 13. Pressure plate bolt (6 req'd)     |
| 2. Clutch assist lever                               | 14. Clutch pressure plate             |
| 3. Felt washer                                       | 15. Clutch release lever              |
| 4. Bolt  | 16. Transaxle assy                    |
| 5. Clutch release lever stud                         | 17. Transmission energy bracket       |
| 6. Clutch release hub and bearing                    | 18. Clutch assist shaft bushing       |
| 7. Clutch disc                                       | 19. Bolt                              |
| 8. Flywheel-to-clutch pressure plate dowel (3 req'd) | 20. Stud (2 req'd)                    |
| 9. Rear of engine                                    | A. Tighten to 35-50 N.m (26-37 lb-ft) |
| 10. Flywheel housing to block dowel (2 req'd)        | B. Tighten to 40-55 N.m (30-40 lb-ft) |
| 11. Bolt (3 req'd)                                   | C. Tighten to 33 N.m (24 lb-ft)       |
| 12. Clutch release lever bushing                     | D. Tighten to 46-63 N.m (34-46 lb-ft) |
|  | E. Tighten to 54-92 N.m (40-68 lb-ft) |