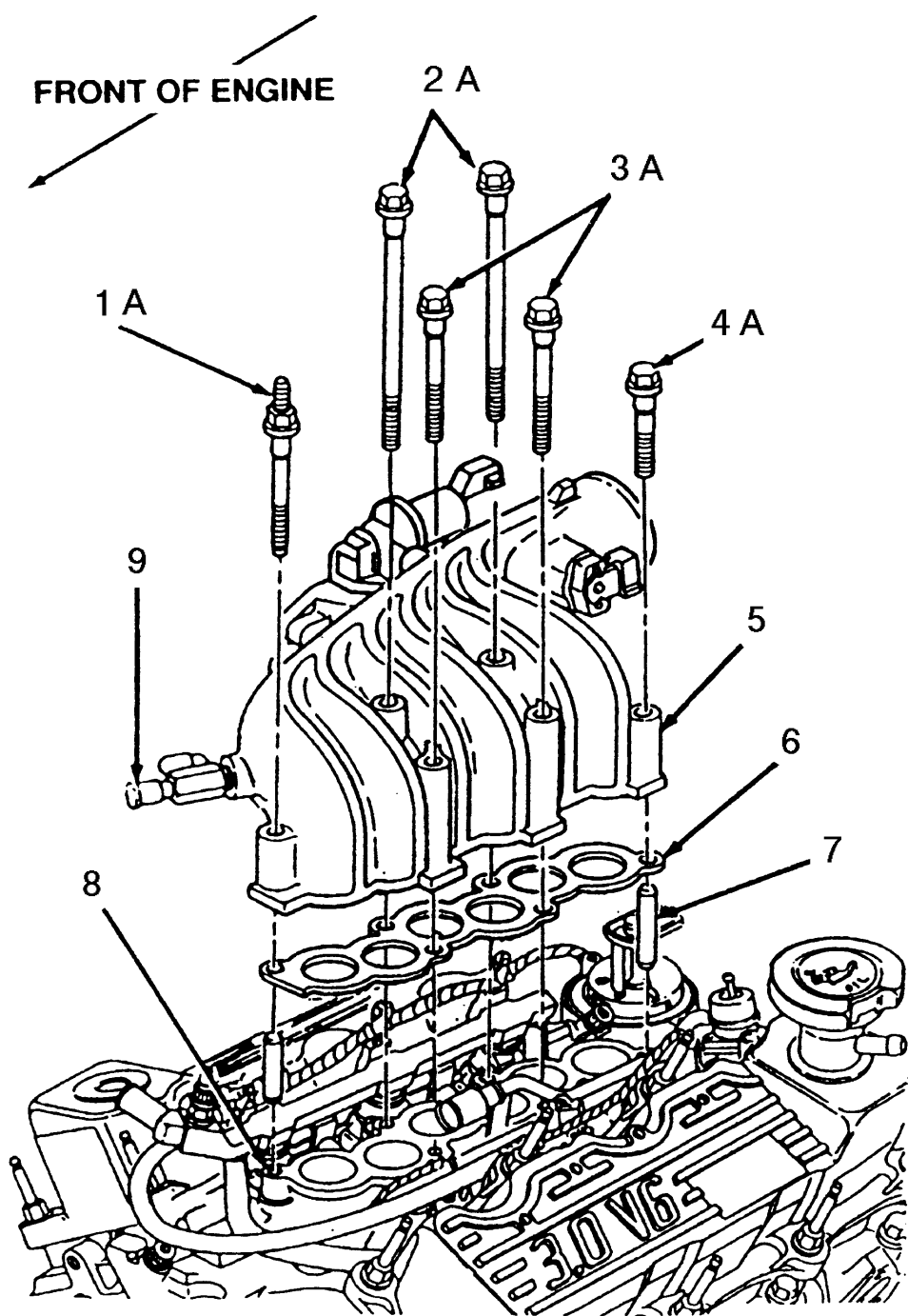


FRONT OF ENGINE



1. Stud bolt
  2. Bolt (2 required)
  3. Bolt (2 required)
  4. Bolt
  5. Throttle body
  6. Intake manifold upper gasket
  7. Guide pin (part of 9H486)
  8. Intake manifold
  9. Intake manifold vacuum outlet fitting and cap
- A. Tighten to 20-30 N.m (15-22 lb-ft)