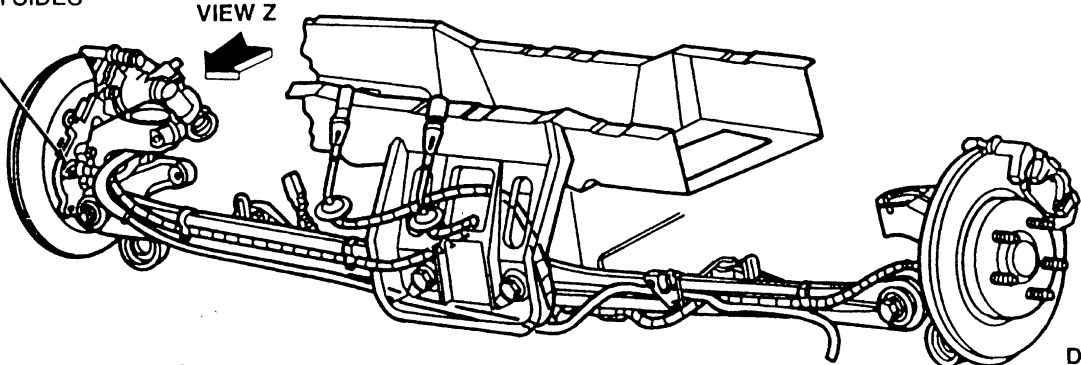
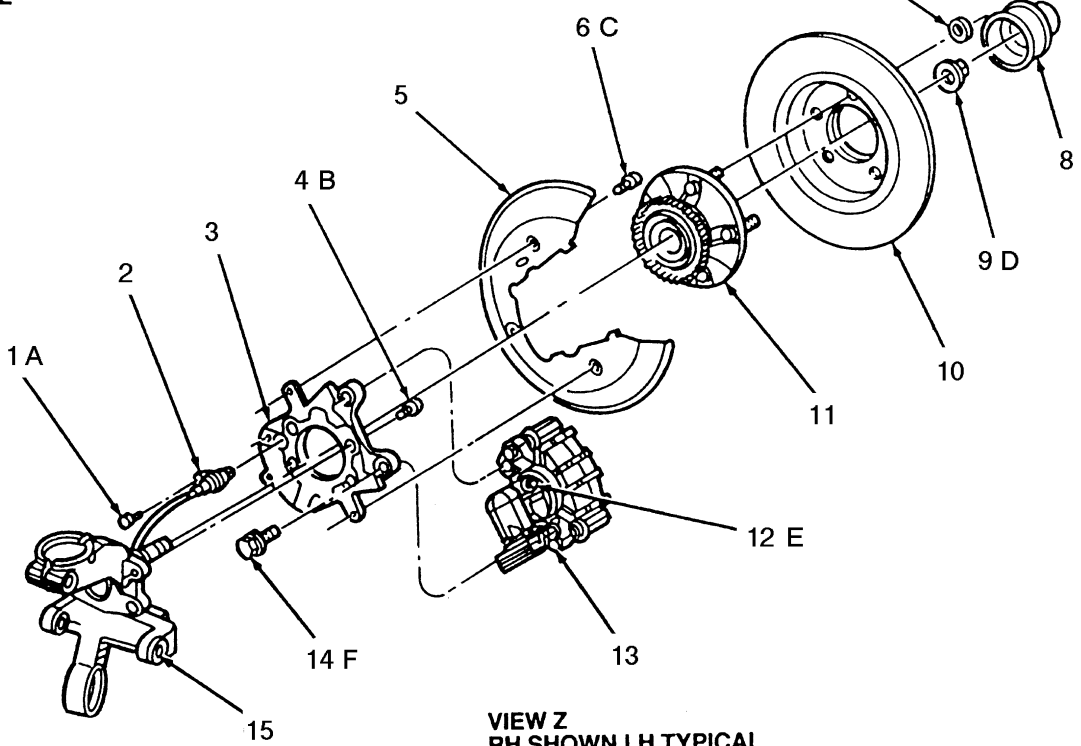


ROUTE ANTI-LOCK WIRE UNDER PARKING BRAKE CABLE-BOTH SIDES



FRONT OF VEHICLE

DO NOT INSTALL ADJACENT TO EACH OTHER



- 1A. Bolt
 - 2. Rear brake anti-lock sensor
 - 3. Rear disc brake adapter
 - 4B. Bolt (4 required)
 - 5. Rear wheel disc brake shield
 - 6C. Bolt (3 required)
 - 7. Hub nut
 - 8. Front hub cap grease seal
 - 9D. Retainer nut (2 required)
 - 10. Rear disc brake rotor
 - 11. Wheel hub
 - 12E. Wheel cylinder bleeder screw
 - 13. Rear disc brake caliper
 - 14F. Bolt (2 required)
 - 15. Rear wheel spindle
- A. Tighten to 4.5-6.8 N.m (40-60 lb-in)
 - B. Tighten to 59-81 N.m (44-60 lb-ft)
 - C. Tighten to 8-12 N.m (6-9 lb-ft)
 - D. Tighten to 255-345 N.m (188-254 lb-ft)
 - E. Tighten to 8-13 N.m (71-115 lb-in)
 - F. Tighten to 87-119 N.m (64-88 lb-ft)